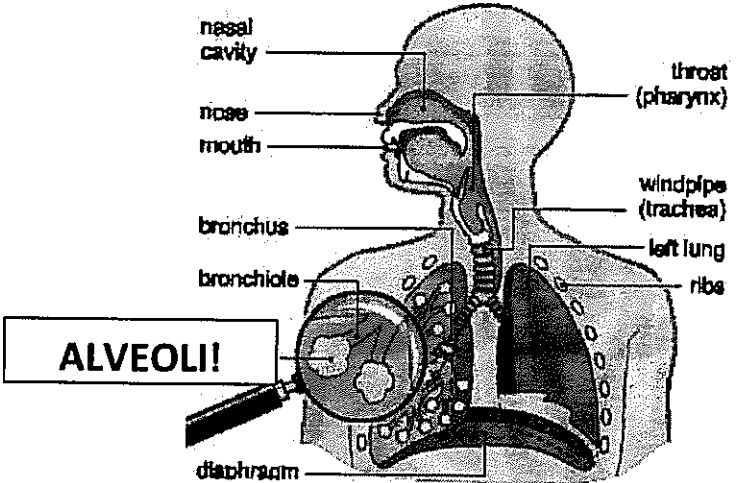


Name _____ Per. _____

Instructions: Use your reading on passive transport and the information in the boxes to answer the questions below.

Your lungs are made up of clumps of a thin tissue called alveoli. This is the site of gas exchange where oxygen enters the body (breathing in) and carbon dioxide exits (breathing out).



1. From your reading on passive transport and your knowledge of diffusion, explain how oxygen and carbon dioxide are exchanged between the cells in your lungs and your blood cells. Write at least 3 complete sentences to explain your thoughts.

